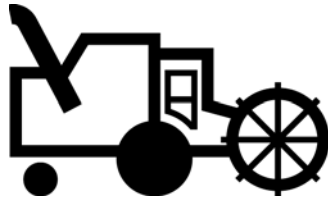


## Harvest Festival

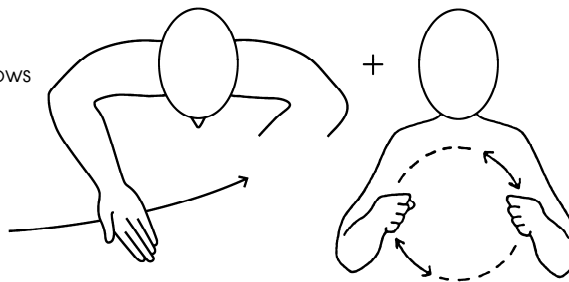
### Makaton Symbols and Signs

**Combine Harvester**  
(Animals, Transport  
and Vehicles)

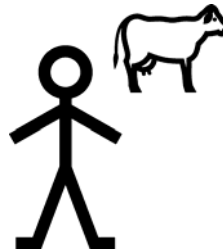


**Combine Harvester**  
(Animals, Transport  
and Vehicles)

Hand shows  
scything  
action



**Farmer**  
(Core Vocabulary)



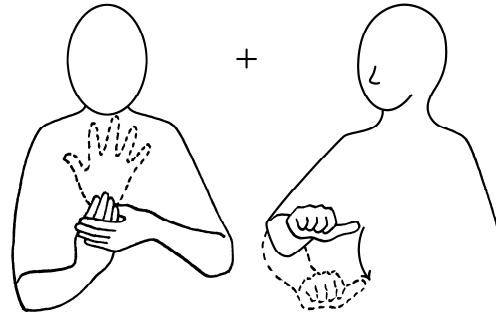
**Farmer**  
(Core Vocabulary)



**Farmer (6) (arable)**  
(People: work and leisure)



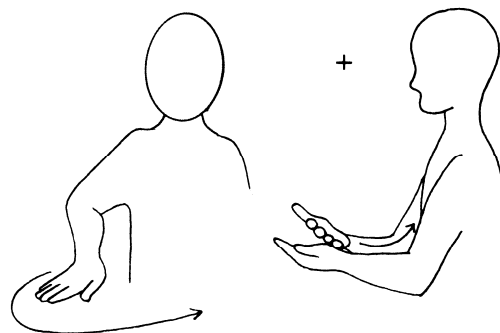
**Farmer (6) (arable)**  
(People: work and leisure)



**Field/ Meadow**  
(National Curriculum)



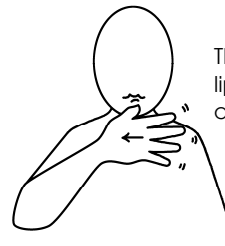
**Field/ Meadow**  
(National Curriculum)



**Fruit**  
(Core Vocabulary,  
Food and Drink)

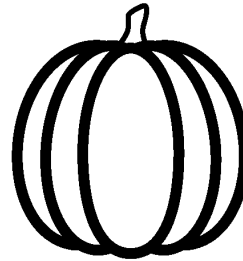


**Fruit**  
(Core Vocabulary,  
Food and Drink)

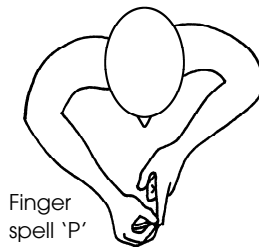


Thumb under lower lip, hand moves across chin to side

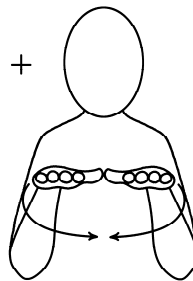
**Pumpkin**  
(Food and Drink)



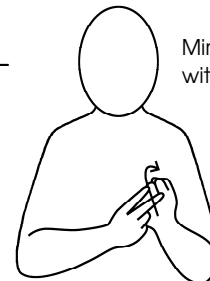
**Pumpkin**  
(Food and Drink)



Finger spell 'P'



Outline shape of pumpkin

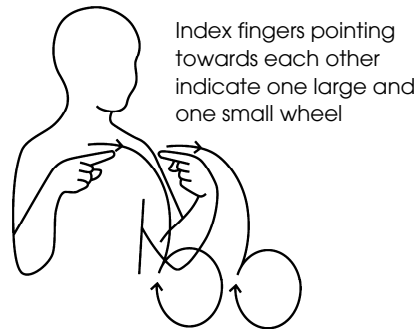


Mime 'V' shape with fingers

**Tractor**  
(Animals, Transport  
and Vehicles)



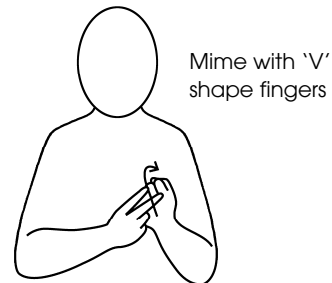
**Tractor**  
(Animals, Transport  
and Vehicles)



**Vegetables**  
(Core Vocabulary,  
Food and Drink)



**Vegetables**  
(Core Vocabulary,  
Food and Drink)

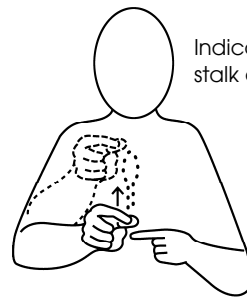


# MAKATON®

Wheat



Wheat

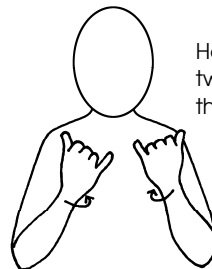


Indicate outline of stalk and ear of wheat

Celebrate



Celebrate

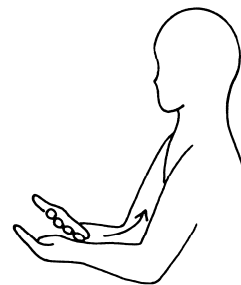


Hands move up with twist movements at the wrist

**Fruit and Vegetables  
Group**  
(Food and Drink)



**Harvest**



Repeat  
movement

There are more symbols and signs you might need for Harvest Festival in these Makaton Resource Vocabulary books:

- **Core Vocabulary:** Food, Garden, To Grow, Friends, Horse, Flowers, Cake, Party.
- **Animals, Transport and Vehicles:** Horse, Lorry.
- **Food and Drink:** Food items, including named fruit and vegetables and packaging items.
- **People: work and leisure:** Other types of Farmers, Farm Worker.

For more information or to order online visit [www.makaton.org](http://www.makaton.org) or 01276 606789.